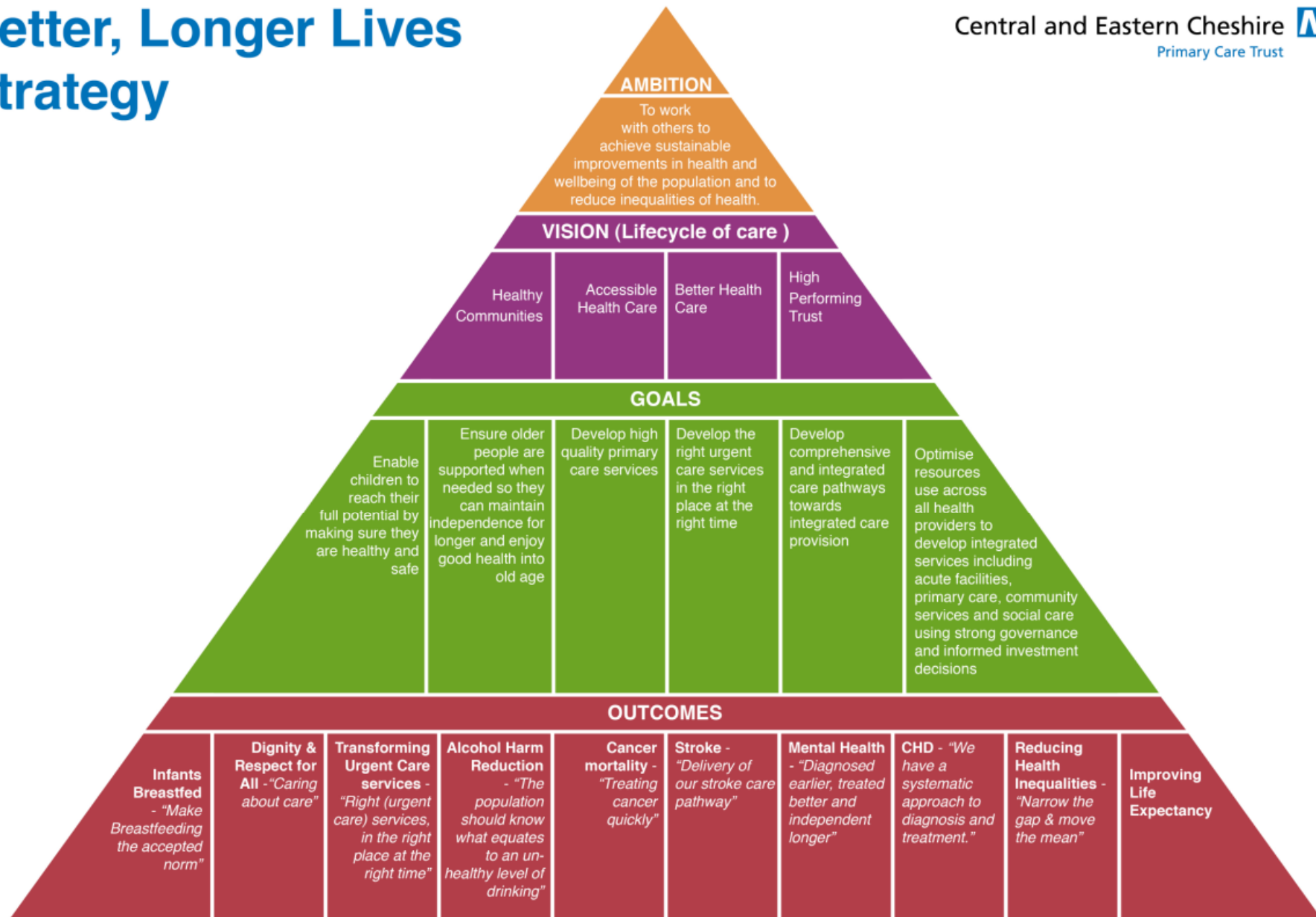


# COMMISSIONING STRATEGY 2009-16 Refresh of Terminology

Presented By : Fiona Field

# Better, Longer Lives Strategy



**AMBITION : Working with others to achieve improvement in health & wellbeing of the population we serve.....BETTER, LONGER LIVES**


<i>VISION 1</i>	<i>VISION 2</i>	<i>VISION 3</i>	<i>VISION 4</i>
<b>Healthy Communities</b>	<b>Accessible Healthcare</b>	<b>Better Healthcare</b>	<b>High Performing Trust</b>
<i>Strategic Goals</i>	<i>Strategic Goals</i>	<i>Strategic Goals</i>	<i>Strategic Goals</i>
Enable <b>Children</b> to research their full potential by making sure they are healthy.	To assist <b>Urgent Care Providers</b> to develop right services, right time, right place.	To develop comprehensive <b>Integrated Care</b> pathways	To ensure the Trust operates within <b>integrated governance</b> arrangements
Ensure <b>Older People</b> are supported when needed, so that they can remain independent.	To assist <b>Primary Care Providers</b> to develop right services, right time, right place.		To recruit, retain and develop <b>Staff</b> to provide effective health workforce
			Ensure Financial requirements are in line with Use of Resource Assessment to provide <b>value for money</b> services
			To ensure robust <b>Patient , Public &amp; Partner engagement</b> helps measure understanding and satisfaction levels
<i>Success Outcomes</i>	<i>Success Outcomes</i>	<i>Success Outcomes</i>	<i>Success Outcomes</i>
Infants Breastfed	Transforming Urgent Care	Stroke Care	Better value services provided
Alcohol Harm Reduction	Dignity and Respect for All	Dementia Care / CHD	Obtain good satisfaction levels from all stakeholders
Reducing Health Inequalities		Mental Health	
Improve life expectancy		Cancer Mortality	
<i>Work Stream Initiatives</i>	<i>Work Stream Initiatives</i>	<i>Work Stream Initiatives</i>	<i>Work Stream Initiatives</i>
CP1 Lifestyles CP5 Maturity & Children Services P13 Sexual Health Strategy	CP2 Urgent Care Modernisation CP3 Intermediate Services CP8 Community Hospital Project CP11 Primary Care Development CP15 Transforming Community Services CP17 Dignity & Respect	CP4 Integrate care pathways for Long Term Conditions CP6 Dementia Care CP7 Stroke Services CP9 Cancer Outcomes CP10 End of Life Care CP12 Healthcare at Styal Prison CP14 Reduce CVD & improve cardiac services CP16 Commissioning elective capacity	
<i>Accountable Measures</i>	<i>Accountable Measures</i>	<i>Accountable Measures</i>	<i>Accountable Measures</i>
Reduce by ??% number of recorded alcohol, smoking and obese related illnesses	Reduce waiting times by ??%	Develop Stroke services to increase by ??% number of physiotherapy Assessment within 72 hours	Healthcare Standards improve grade from Fair to Good.
Increase by ??% number of mothers breastfeeding their baby until 6 months old.	Increase by ??% number of cancer treatments dealt within the 62 day pathway target	50,000 undiagnosed population to receive screening for CHD controlled blood pressure to prevent hypertension.	Use of Resources to improve score from 2 to 3
		Increase number of people with mental health conditions to return to work	Improve satisfaction levels from the Staff Survey and GP Access Survey.

Healthy  
Communities

Accessible  
Health Care

Better  
Health Care

High  
Performing Trust

Central and Eastern Cheshire  
Primary Care Trust 



## A step change to...

...promoting cohesive community health and  
wellbeing

Year 2009-10

### 'What we did'

As part of the Trust's steps towards becoming a high performing organisation in terms of being the key leader within the local health economy, managing our financial resources and training and retaining high quality staff to deliver the required healthcare services has been demonstrated through ???WHAT???

The Trust's ??? team working in collaboration with other key public sector providers within Central & Eastern Cheshire through the Local Area Agreement in terms of delivering against the Comprehensive Area Agreement.

The Trust's offers various

The support being provided to

There have

### 'What you think'

Ascertain stakeholder feedback 'quotes' +  
images on performance activity

### "How we performed"

Include key accountable measures being used to  
help monitor performance activity include:-

Better, Longer Lives

Healthy Communities

Accessible Health Care

Better Health Care

High Performing Trust

Central and Eastern Cheshire  
Primary Care Trust



# A step change to...

...enabling healthcare providers to offer right services, at right place, at right time

Year 2009-10

## 'What we did'

As part of the Trust steps towards enabling our healthcare providers to offer right services, in the right place, at the right time is being delivered through shared business links with key suppliers from Primary Healthcare, Secondary Healthcare and Mental Health Services.

The Trust's Medicines Management team working in collaboration with Community Pharmacists using funding allocated by our Public Health team to train health advocates as part of improvement on health and wellbeing of the community we serve.

The Trust's Advocates scheme offers various ays for residents to?????????. In Summer 2009, the Trust successfully assisted ??????????

The support being provided to

There have been ???? children aged ?? to ?? over the last year who have sought support from the team which has seen

## 'What you think'

Ascertain stakeholder feedback 'quotes' + images on performance activity

## "How we performed"

Include key accountable measures being used to help monitor performance activity include:-

Better, Longer Lives

Healthy  
Communities

Accessible  
Health Care

Better  
Health Care

High  
Performing Trust

Central and Eastern Cheshire   
Primary Care Trust



## A step change to...

... developing better healthcare treatment  
for life time events

Year 2009-10

### 'What we did'

As part of the Trust's steps towards redesigning healthcare pathways that provide better journey for patients who present with life time events  
??WHAT?????

The Trust's ???? team working in collaboration with other key public sector providers within Central & Eastern Cheshire through the Local Area Agreement in terms of delivering against the Comprehensive Area Agreement.

The Trust's offers various

The support being provided to

There have

### 'What you think'

Ascertain stakeholder feedback 'quotes' +  
images on performance activity

### "How we performed"

Include key accountable measures being used to help monitor performance activity include:-

Better, Longer Lives

